

# Online Non-contact Gloss Meter YG60L

The non-contact glossmeter YG60L is an online glossmeter innovatively developed by our company. The test probe is non-contact with the tested sample, realizing non-contact testing of liquid, paste, powder, vulnerable objects and other samples. The simple probe design allows this product to be placed anywhere on the automated production line.



Rapid measurement



Support multi-mode

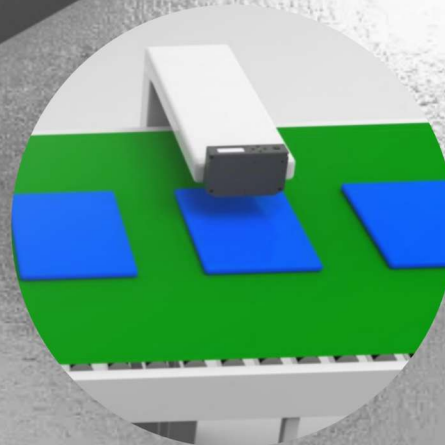


Print test results



High end quality management software

The measurement time can be as fast as 0.2 seconds. It can communicate with other systems through Bluetooth or USB. Various communication interfaces demonstrate routines. The software function can be customized (additional customization costs will be incurred according to the assessment).



Free assembly



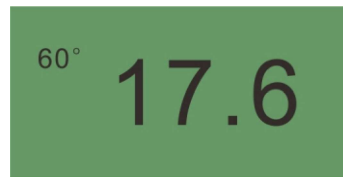
**Optional accessories: Micro printer**

without computer can continuously print out the measurement of various parameters, easy to save.

**Application of online glossmeter:**

It can be used for online glossiness measurement and quality inspection in paint, ink, coating, paper printing, plastic electronics, furniture, ceramics, electroplating, hardware, marble and other industries. Its unique innovative design can not only provide a non-contact measurement scheme directly from the production line, but also ensure stable and high-precision measurement results.

# CONVENIENT AND FAST ACCURATE MEASUREMENT



## 60° Intelligent glossmeter

With the development of industry, measurement has entered an intelligent era, and a fast and accurate glossmeter is needed in the market. Therefore, YG60L was born. It is the only online glossmeter that integrates high accuracy, ease of use and multi-function - designed for the standards of pipeline glossiness quality management. In addition, GQC6, as an intelligent data processing software, is an ideal tool for professional data management and effective data analysis.



Measure the luster of metals,  
ceramics and plastics

Support matte and mirror measurement

With YG60L gloss meter, you can measure the gloss of any material, paint, plastic or high gloss metal. The measurement range ranges from matte products to products with 1000 gloss units of mirror reflection, which can always maintain reliable results and conform to international standards.



The unique feature is that the intelligent automatic diagnosis function ensures long-term stable calibration, tells you when to calibrate, and even checks whether the standard board is clean. Easy to operate, safe and reliable.



## Reliable calibration

Accurate readings require reliable calibration. Professional standard white board with reflectivity  $R\% \geq 95\%$  has good surface uniformity and high stability, and can obtain repeated accurate data.

# Multiple measurement modes meet the work requirements

Different work requires different measurement modes. You can quickly select the desired mode by using the buttons on the instrument, or you can select the mode by connecting the computer:

Basic measurement mode: it can measure samples quickly and simply for you.

Statistical measurement mode: not only the average value is displayed, but also the statistical data can be used to determine whether there is a measurement error or to determine the homogeneity of the sample. You can customize all the data you want to see: average, standard deviation, range, maximum/minimum

Quality control measurement mode: the quality control mode can compare the measurement result with the standard sample;

Continuous measurement mode: it is the most effective method to quickly check the homogeneity of large area samples. After you confirm the measurement interval, slide the micro gloss meter on the sample continuously, and obtain continuous measurement results immediately. After the measurement, the screen displays the range of average value and maximum/minimum value.

## Advanced glossiness measurement is indispensable

YG60L can adapt to different working environments. Even in a bad environment, it can achieve accurate measurement, fast and reliable measurement, which is recognized by the majority of users.

Full spectrum lamp beads, no missing spectrum, ensure accurate measurement. High quality lamp beads can not only provide long-term stable light source, but also reduce maintenance costs. They are of excellent quality and durable.

Thanks to advanced temperature control technology, YG60L glossmeter ensures high stability of measurement data, whether you are in the laboratory or moving to the production line.

We have a number of patents to ensure that each gloss meter produced has an excellent stand to stand difference. And each instrument is measured by a professional measurement and testing organization, which can meet the work requirements of national standards. As long as we use two glossmeters of the same model, we can ensure the consistency of measurement data.

## Application:



Ship



Automobile



Paint



Ceramics



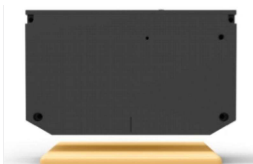
Plastic

# Product features:



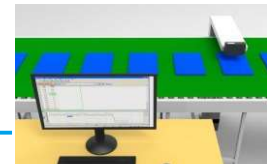
## Easy to view digital screen

Simple design, large numbers, easy to view. The key operation, multi language display and measurement indicator display make gloss measurement easier than ever.



## Non contact measurement without damaging the product

Precise glossiness data measurement can be realized when the distance from the measured plane is 10mm, and the measured sample will not be cross contaminated.



## Online real-time monitoring of product glossiness

Open data interface, system integration can be carried out and application scope can be expanded.



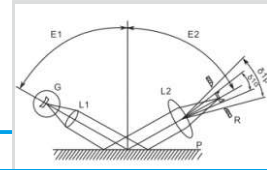
## Data stability

The repeatability of the instrument is very good. Within the measurement range of 0-100GU, the repeatability can reach  $\pm 0.5GU$ , and within the measurement range of 100-1000GU, the repeatability can reach  $\pm 0.5\%$  of the reading.



## High-precision

The measurement accuracy reaches 0.1GU, with accurate measurement and stable and reliable data.



## Industrial standard

Professional glossmeter measurement, meeting the requirements of JYG696 standard working glossmeter.



## Metrological verification report

The instrument shall be calibrated according to the measurement standards of the authoritative verification department before delivery to ensure the authority of the instrument test data.



## Rapid measurement

The measurement accuracy reaches 0.1GU, with accurate measurement and stable and reliable data.

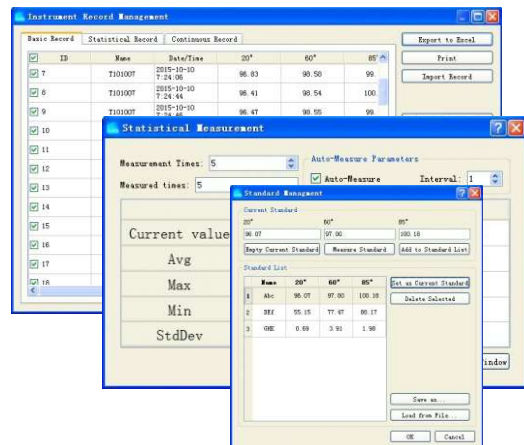


## Bluetooth transmission

YG60L supports the data transmission of the new version of Bluetooth 5.0, with fast transmission speed. It is very convenient to connect the micro Bluetooth printer or transfer data to the computer.

# Quality control through GQC6 software

- Measure your products online and transfer the results to the computer GQC6 software. Immediately, you can get professional QC reports, including data sheets and graphs.
- Establish product specifications in the standard management module, and the products are qualified and unqualified. The tolerance value of the grid will be displayed in your QC report.
- The software is ideal for online measurement of multiple products.
- The measurement sample record can be renamed and searched, and the sample identification is clear at a glance. It is convenient to export, print and organize.
- Flexible data analysis can be performed on data identified by multiple parameters within a specific time range. Monitor the stability of your production process by using trend report charts and SPC charts.



## Technical Parameter

<b>Product Model</b>	YG60L Non-Contact Gloss Meter
<b>Measuring Angle</b>	60°, Conform to Standards: ISO 2813、ASTM D 523、GB/T 9754
<b>Measuring Spot(mm)</b>	60°:9X15
<b>Measurement Range</b>	60°:0~1000GU
<b>Division Value</b>	0.1GU
<b>Non-contact Distance</b>	Non-contact distance 10.0mm±0.1, the parallelism between the measured surface of the sample and the measuring aperture surface is 0.2 degrees
<b>Measuring Modes</b>	Basic Mode, Statistical Mode, Continuous Mode, Quality Mode
<b>Measuring Time</b>	0.2s/1s
<b>Repeatability</b>	0~100GU: ±0.5GU ; 100~1000GU: ±0.5%GU Test at intervals of 5 seconds under 10mm verification tooling (ensure test distance 10 and parallelism)
<b>Accuracy</b>	Meet the requirements of JJG 696 working gloss meter
<b>Auto shutdown time</b>	30s、60s、90s、2m or Never Shut Down
<b>Long-time Calibration</b>	With automatic calibration standard function and manual calibration
<b>Language</b>	Simplified Chinese, English, Traditional Chinese
<b>Storage</b>	35000pcs (15,000 records in basic mode and continuous mode, 10,000 records in quality control mode, and 10,000 records in statistical mode)
<b>Display</b>	2.3 inch black and white display
<b>Dimension</b>	140X83X38mm
<b>Weight</b>	About 500g
<b>Power Supply</b>	Use the USB interface power adapter
<b>Data Port</b>	USB, Bluetooth
<b>PC Software</b>	Quality inspection report printing, more function expansion
<b>Operation Temperature Range</b>	0~40℃ (32~104°F)
<b>Storage Temperature Range</b>	-20~50℃ (-4~122°F)
<b>Humidity</b>	Less than 85%RH, no condensation
<b>Standard Accessories</b>	Power adapter, quality management software (official website download or after-sales), calibration standard plate, calibration bracket
<b>Optional Accessories</b>	Micro Printer



MRM Metrology Inc.  
905 595 1000

sales@MRMmetrology.com  
www.MRMmetrology.com

The specifications and design may be changed without notice.