

YG75



HIGH-PRECISION Gloss meter

ISO 9001
Certified

CE

NIM

TÜV

RoHS

FC

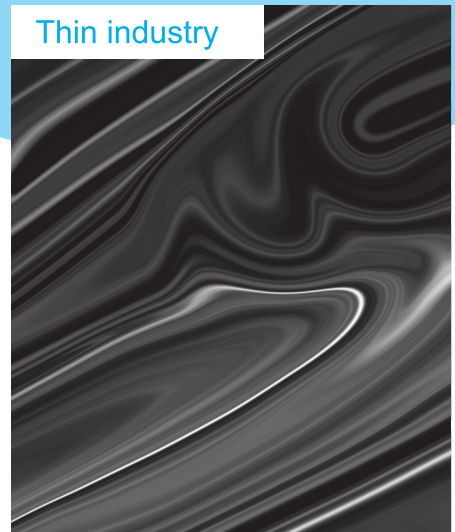
Plastics



Paper industry

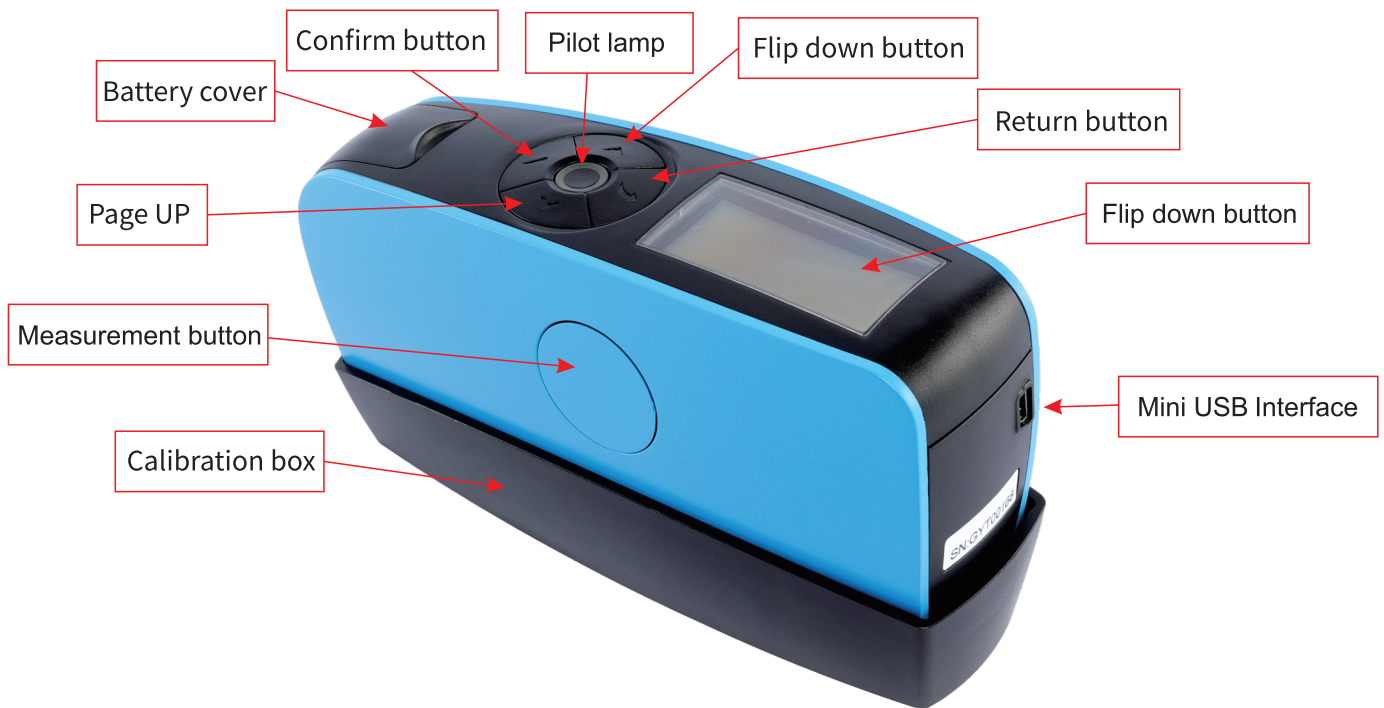


Thin industry



YG75 high-precision glossmeter

The YG75 high-precision glossmeter is a professional instrument used to measure the surface glossiness of objects. It adopts a 75 ° angle measurement method, which can accurately measure the glossiness of the product surface, and is widely used in glossiness measurement and quality inspection in industries such as paper, film, and plastic.



75 ° intelligent glossmeter

With the development of industry, measurement has entered the era of intelligence, and there is a need for a fast and accurate glossmeter in the market. Therefore, YG75 was born, which is a high-precision, easy-to-use, and multifunctional glossmeter.

In addition, GQC6, as an intelligent data processing software, is an ideal tool for professional data management and effective data analysis.



Calibration...

Calibration

75°:Pass

Automatic calibration technology

Accurate readings require reliable calibration. Using a professional calibration board, it has high stability and can obtain repeated and consistent calibration data. The base can effectively protect the calibration board from scratches.

Dual calibration technology, automatic calibration upon startup or manual calibration, controlling measurement accuracy from the source.

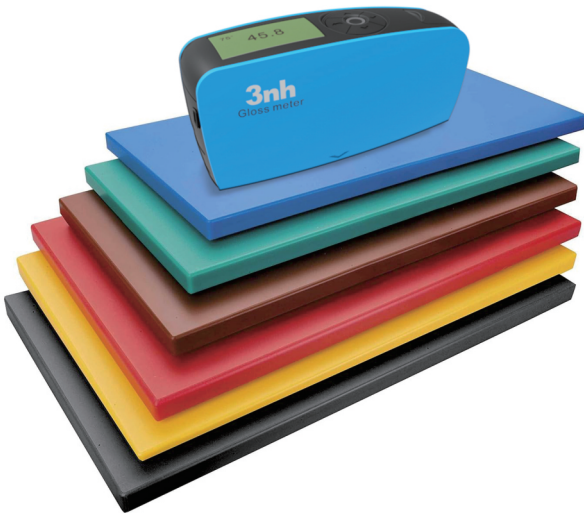
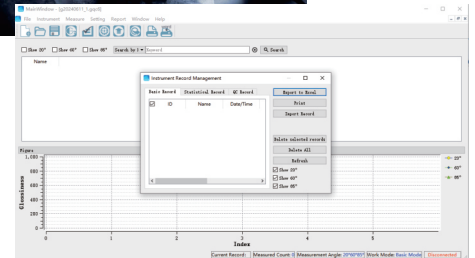
Surface texture can weaken the quality of surface imaging without affecting the glossiness value. The two products on the right obtained the same data using a traditional glossmeter.



Paper measurement that meets industry standards

The 75 ° high-precision glossmeter is suitable for most ink film and hard board papers, and can monitor and control the glossiness of papers with or without coatings. The 75 ° glossmeter can shield the influence of color on gloss measurement, and the impact of color differences is less than one glossiness unit.

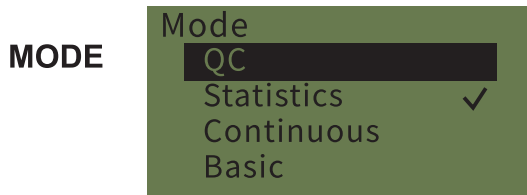
The TAPPI (American Pulp and Paper Industry Technical Association) standard defines a batch quality inspection requirement to inspect at least ten samples for wrinkles or other defects. GQC6 is an ideal gloss measurement software for file processing and data communication. The project management function records the quality changes of materials over time and sends them to relevant personnel by converting them into PDF or Excel format.



Measurement of polyethylene sheets

A typical material for measuring gloss using a special angle of 75 ° is polyethylene sheet, which is mostly made of hard PVC and used for composite exterior walls of buildings.

To evaluate the homogeneity of large-area samples, the "continuous measurement mode" can be used, with preset measurement intervals and YG75 glossmeter sliding on the sample for measurement. The instrument will display the continuous measurement glossiness value.



Continuous measurement mode

<input checked="" type="checkbox"/>	<input type="checkbox"/>	avg	min	4/99	max
		20°	1.8	0.1	2.4
		60°	14.6	14.1	14.9
		85°	17.3	16.9	18.2

Measure the gloss of paper, film, and plastic Supports matte and mirror measurements

Using the YG75 glossmeter, it is particularly suitable for measuring the gloss of paper, cardboard, and plastic materials with structured surfaces. The measurement range ranges from matte products to product surfaces with a mirror gloss of 0-150 units, ensuring reliable results and compliance with international standards.



Multiple measurement modes to meet work needs

Different jobs require different measurement modes. The buttons on the instrument can be used to quickly select the desired mode, or the mode can be selected by connecting to a computer:

Basic measurement mode: It can quickly and easily measure samples for you.

Statistical measurement mode: It not only displays the average value, but also statistical data can be used to determine whether there is measurement error or to determine the homogeneity of the sample. You can customize all the data you want to see: mean, standard deviation, range, maximum/minimum

Quality control measurement mode: The quality control mode can compare the measurement results with the standard sample;

Continuous measurement mode: It is the most effective method for quickly checking the homogeneity of large area samples. After determining the measurement interval, slide the micro glossmeter continuously on the sample to obtain continuous measurement results immediately. After the measurement is completed, the screen displays the range of average and maximum/minimum values.



Advanced glossmeter technology

YG75 can adapt to different working environments, even in harsh environments, and can achieve accurate, fast, and reliable measurements, which has been recognized by a large number of users.

Full spectrum lamp beads ensure accurate measurement without missing spectra. High quality lamp beads not only provide long-term stable light sources, but also reduce maintenance costs. Excellent quality and durability.

Thanks to advanced temperature control technology, the YG75 glossmeter ensures highly stable measurement data, whether you are in the laboratory or moving to a production line.

We have multiple patents to ensure that each gloss tester we produce has excellent inter machine differences. And each instrument is measured by professional metrology and testing institutions, which can meet the working requirements of national standards. As long as we use our two glossometers of the same model, we can ensure the consistency of the measurement data.

Application:

Paper industry



Thin industry



Plastics

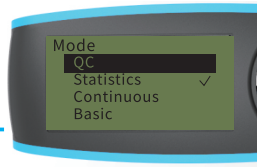


Product features:



Comfortable operation

The streamlined surface design is more ergonomic and can maintain comfortable grip even during daily or continuous work, effectively avoiding fatigue and providing users with a good operating experience.



Multiple measurement modes

Supports switching between basic mode, statistical mode, continuous mode, and quality management mode.



Low Power

A fully charged No. 5 battery (AA alkaline battery or nickel hydrogen rechargeable battery) can be tested more than 10000 times.



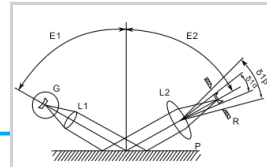
Calibration function

Support regular calibration and have the function of automatically checking calibration standard boards to ensure the accuracy and reliability of long-term measurements.



Portable

Lightweight design, easy to carry, not only suitable for precise laboratory measurements, but also convenient for flexible application in production sites.



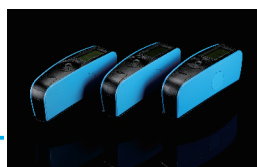
Industrial grade standard

Professional glossmeter measurement, meeting the requirements of JJG696 standard working glossmeter.



Metrological appraisal

The instruments are calibrated according to the measurement standards of authoritative calibration departments before leaving the factory, ensuring the authority of instrument testing data.



Excellent repeatability

The repeatability is very good, within the measurement range of 0-100GU, the repeatability can reach $\pm 0.2GU$, and within the measurement range of 100-150GU, the repeatability can reach $\pm 0.2\%GU$.

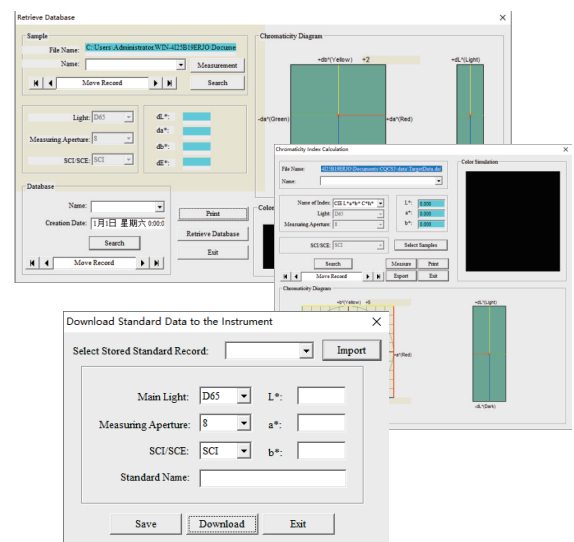


PC software

The instrument is equipped with powerful PC data management software, which supports online measurement, can print test reports, transmit data, and achieve more functional extensions.

Quality control through GQC6 software

- Measure your product online and transfer the results to the GQC6 software on your computer. Immediately, you will receive a professional QC report, which includes data sheets and curve graphs.
- Establish product specifications in the standard management module, ensuring that the products are qualified and non compliant. The tolerance of the grid will be displayed in your QC report.
- This software is an ideal choice for online measurement of multiple products.
- The measurement sample record can be renamed, searched, and the sample identification is clear at a glance. Exporting, printing, and organizing are convenient and fast.
- Flexible data analysis can be performed on data identified by multiple parameters within a specific time range. Monitor the stability of your production process by using trend report charts and SPC charts.



Technical Parameter

Model	YG75 high-precision glossmeter
Measuring angles	75°
Measurement aperture (mm)	75° : 4x6
Measurement range	75° : 0-150GU
Accuracy	0-100GU: 0.1GU 100-150GU: 1GU
Measurement mode	Basic mode, Statistical mode, Continuous mode, Quality management mode
Measurement time	0.5S
Repetitive accuracy	0~100GU:±0.2GU; 100~150GU:1GU;
Accuracy	Meet the requirements of JJG 696 working glossmeter
Automatic shutdown time	30-120S
Long term calibration	Capable of automatic inspection and calibration of standard boards/manual calibration
Language	Simplified Chinese, English, Traditional Chinese
Storage	35000 (15000 in basic and continuous modes, 10000 in quality management mode, and 10000 in statistical mode)
Display screen	2.3 inch Black and white display screen
Size	160X52X84mm
Weight	Approximately 300g (including calibration box and battery)
Power supply	One No. 5 battery (AA alkaline battery or nickel hydrogen rechargeable battery), capable of testing more than 10000 times;
Interface	USB
PC software	GQC6 quality management software, printing quality inspection reports, and more functional extensions
Standard accessories	USB data cable, instruction manual GQC6 quality management software (downloaded from official website or provided by after-sales service), calibration board
Optional accessories	Mini printer, Bluetooth adapter
Attention	Technical parameters are for reference only, subject to actual sales of products

Standard configuration::

Gloss Meter
 Base With Calibration Plate
 Certificate Of Conformity
 Usb Transmission Cable
 Operation Manual
 Warranty Card
 Wiping Cloth

GQC6 Installation Requirements:

System: Windows
 CPU: Core 2 Duo, 2.2 GHz, i3 more than
 Memory: 4 GB RAM, 8 GB recommendation
 Storage: At least 300MB
 Display: 1280 x 1024 or higher
 Interface: USB port
 Download method: official website download



MRM Metrology Inc.
 905 595 1000
 sales@MRMmetrology.com
 www.MRMmetrology.com