

45° & 75° Dual angle

## High precision glossmeter

# Excellent craftsmanship

- Supports simultaneous measurement at 45° and 75°
- Equipped with automatic calibration function upon startup
- Multiple measurement modes
- Low power and energy-saving design



Fast measurement



Multimode

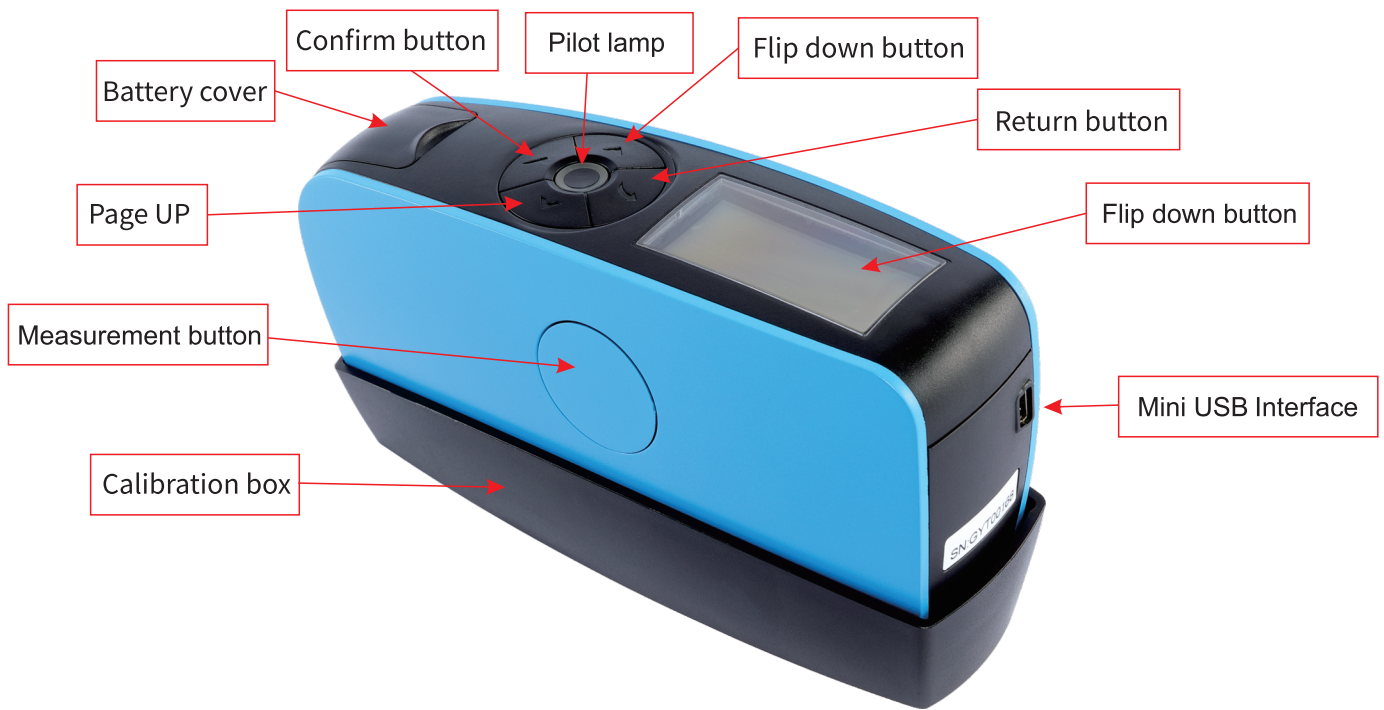


Automatic calibration



PC Software





## Intelligent glossmeter

With the development of industry, measurement has entered the era of intelligence, and the market requires a fast and accurate glossmeter. YG47 was born as a result, which is a high-precision, easy-to-use, and multifunctional glossmeter.

In addition, GQC6, as an intelligent data processing software, is an ideal tool for professional data management and effective data analysis.



Calibration ...

Calibration  
45°: Pass  
75°: Pass

## Automatic calibration technology

Accurate readings require reliable calibration. Using a professional calibration board, it has high stability and can obtain repeated and consistent calibration data. The base can effectively protect the calibration board from scratches.

Dual calibration technology, automatic calibration upon startup or manual calibration, controlling measurement accuracy from the source.

Surface texture can weaken the quality of surface imaging without affecting the glossiness value. The two products on the right obtained the same data using a traditional glossmeter.

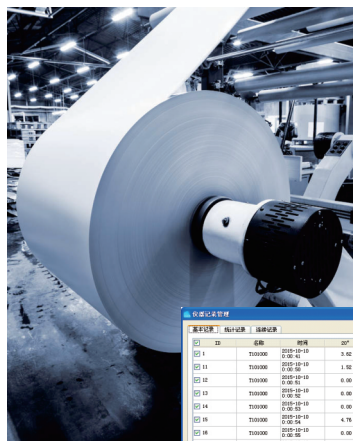


# Gloss measurement for special applications

Special materials require special measurement angles:

Ceramic materials, plastic films and hard plastics, paper and cardboard can be measured not only at conventional angles of 20°, 60°, and 85°, but also at 45° or 75° according to industry standards.

The 45°/75° high-precision glossmeter is suitable for most ink film paper and hard board paper, and can monitor and control the glossiness of paper without coating. The 45°/75° glossmeter can shield the influence of color on gloss measurement, with color differences affecting less than one glossiness unit.

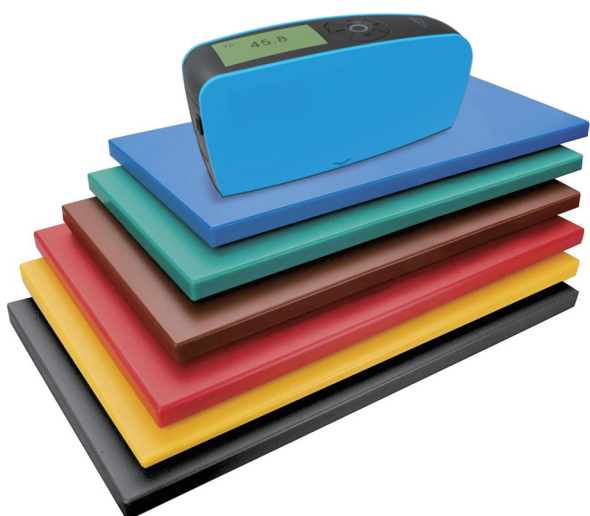


NO.	MODE	ANGLE	20°	60°	85°
01	TI00000	01:00-10:10 01:00-01	3.62	0.00	3.36
02	TI00000	01:00-10:10 01:00-01	1.52	0.00	0.80
03	TI00000	01:00-10:10 01:00-01	0.00	0.00	0.00
04	TI00000	01:00-10:10 01:00-01	0.00	0.00	0.00
05	TI00000	01:00-10:10 01:00-01	0.00	0.00	0.00
06	TI00000	01:00-10:10 01:00-01	4.78	24.06	0.00
07	TI00000	01:00-10:10 01:00-01	0.00	0.00	0.30
08	TI00000	01:00-10:10 01:00-01	1.33	21.89	4.19
09	TI00000	01:00-10:10 01:00-01	0.00	0.00	22.18
10	TI00000	01:00-10:10 01:00-01	8.87	4.45	0.00
11	TI00000	01:00-10:10 01:00-01	0.00	14.00	7.19
12	TI00000	01:00-10:10 01:00-01	0.78	0.00	0.00

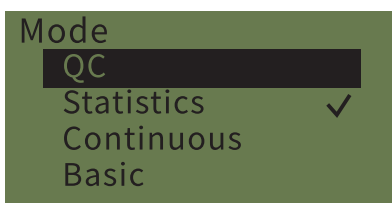
## Measurement of polyethylene sheets

A typical material for measuring gloss using a special angle of 75° is polyethylene sheet, which is mostly made of hard PVC and used for composite exterior walls of buildings.

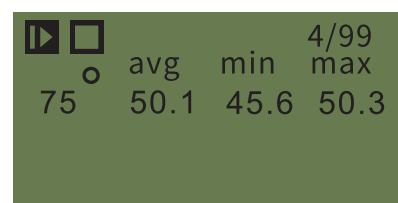
To evaluate the homogeneity of large-area samples, the "continuous measurement mode" can be used, with preset measurement intervals and YG47 glossmeter sliding on the sample for measurement. The instrument will display the continuous measurement glossiness value.



### MODE



### Multiple measurements



## Measure the gloss of paper, film, and plastic Supports matte and mirror measurements

Using the YG47 glossmeter, it is particularly suitable for measuring the gloss of paper, cardboard, and plastic materials with structured surfaces. The measurement range ranges from matte products to product surfaces with a mirror gloss of 0-800 units, ensuring reliable results and compliance with international standards.



## Multiple measurement modes to meet work needs

Different jobs require different measurement modes. The buttons on the instrument can be used to quickly select the desired mode, or the mode can be selected by connecting to a computer:

Basic measurement mode: It can quickly and easily measure samples for you.

Statistical measurement mode: It not only displays the average value, but also statistical data can be used to determine whether there is measurement error or to determine the homogeneity of the sample. You can customize all the data you want to see: mean, standard deviation, range, maximum/minimum

Quality control measurement mode: The quality control mode can compare the measurement results with the standard sample;

Continuous measurement mode: It is the most effective method for quickly checking the homogeneity of large area samples. After determining the measurement interval, slide the micro glossmeter continuously on the sample to obtain continuous measurement results immediately. After the measurement is completed, the screen displays the range of average and maximum/minimum values.



## Advanced technology and indispensable glossiness measurement

YG47 can adapt to different working environments, even in harsh environments, and can achieve accurate, fast, and reliable measurements, which has been recognized by a large number of users.

Full spectrum lamp beads ensure accurate measurement without missing spectra. High quality lamp beads not only provide long-term stable light sources, but also reduce maintenance costs. Excellent quality and durability.

Thanks to advanced temperature control technology, the YG47 glossmeter ensures highly stable measurement data, whether you are in the laboratory or moving to a production line.

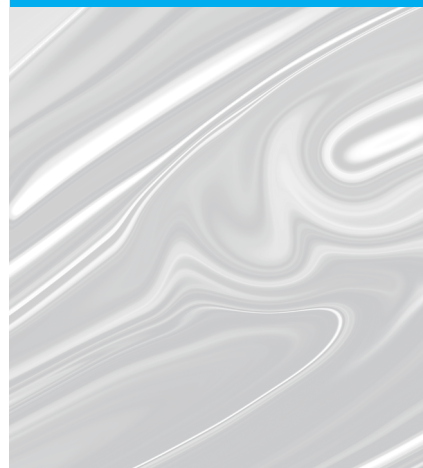
We have multiple patents to ensure that each glossmeter we produce has excellent inter machine differences. And each instrument is measured by professional metrology and testing institutions, which can meet the working requirements of national standards. As long as we use our two glossmeters of the same model, we can ensure the consistency of the measurement data.

## Application:

### Paper industry



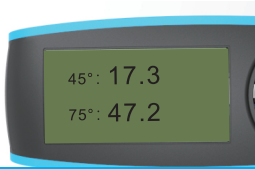
### Thin film industry



### Plastic industry

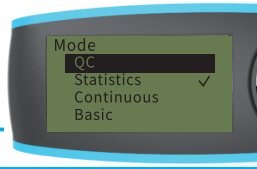


# Product features:



## Dual angle

The instrument has two measurement angles of 45 ° and 75 °, which can be used for single angle measurement or dual angle measurement simultaneously, making it more applicable.



## Multiple modes

Supports switching between basic mode, statistical mode, continuous mode, and quality management mode.



## Low-power consumption

A fully charged No. 5 battery (AA alkaline battery or nickel hydrogen rechargeable battery) can be tested more than 10000 times.



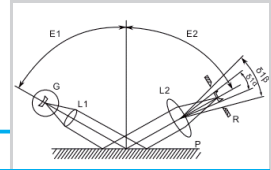
## Calibration function

Support regular calibration and have the function of automatically checking calibration standard boards to ensure the accuracy and reliability of long-term measurements.



## Lightweight and portable

Lightweight design, easy to carry, not only suitable for precise laboratory measurements, but also convenient for flexible application in production sites.



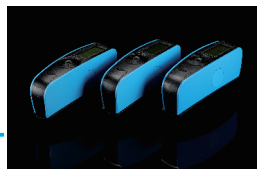
## High measurement accuracy

The carefully calibrated measurement system and optical layout ensure stable and accurate gloss measurement, meeting the requirements of JJG 696 working glossmeter. The performance is superior and can fully match the test data of imported glossmeter.



## Authentication

The instruments are calibrated according to the measurement standards of authoritative calibration departments before leaving the factory.



## Easy to use

The instrument is easy to operate, without complex settings, and can complete the measurement in 0.5 seconds.

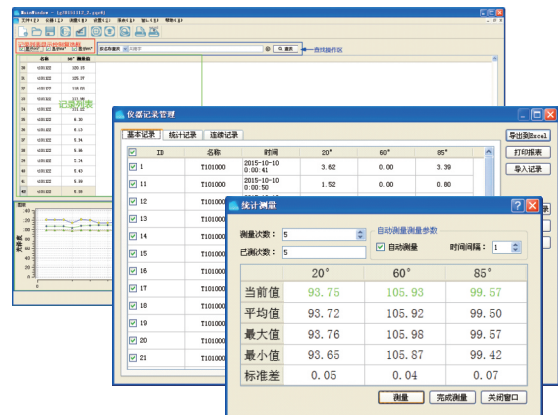


## PC software

The instrument is equipped with powerful PC data management software, which supports online measurement, can print test reports, transmit data, and achieve more functional extensions.

# Quality control through GQC6 software

- Measure your product online and transfer the results to the GQC6 software on your computer. Immediately, you will receive a professional QC report, which includes data sheets and curve graphs.
- Establish product specifications in the standard management module, ensuring that the products are qualified and non compliant. The tolerance of the grid will be displayed in your QC report.
- This software is an ideal choice for online measurement of multiple products.
- The measurement sample record can be renamed, searched, and the sample identification is clear at a glance. Exporting, printing, and organizing are convenient and fast.
- Flexible data analysis can be performed on data identified by multiple parameters within a specific time range. Monitor the stability of your production process by using trend report charts and SPC charts.



# Technical Parameter

<b>Model</b>	YG47 high-precision glossmeter
<b>Measuring angles</b>	45° /75°
<b>Measurement aperture (mm)</b>	45°: 10x13 75°:4x6
<b>Measurement range</b>	45°: 0~800GU 75°: 0~150GU
<b>Accuracy</b>	0~100GU: 0.1GU 100~800GU: 1GU
<b>Measurement mode</b>	Basic mode, Statistical mode, Continuous mode, Quality management mode
<b>Measurement time</b>	0.5 seconds per angle
<b>Repetitive accuracy</b>	0~100GU:±0.2GU ; 100~800GU:±0.2%GU
<b>Accuracy</b>	Meet the requirements of JJG 696 working glossmeter
<b>Automatic shutdown time</b>	30-120S
<b>Long term calibration</b>	Capable of automatic inspection and calibration of standard boards/manual calibration
<b>Language</b>	Simplified Chinese, English, Traditional Chinese
<b>Storage</b>	35000 (15000 in basic and continuous modes, 10000 in quality management mode, and 10000 in statistical mode)
<b>Display screen</b>	2.3 inch Black and white display screen
<b>Size</b>	160X52X84mm
<b>Weight</b>	Approximately 300g (including calibration box and battery)
<b>Power supply</b>	One No. 5 battery (AA alkaline battery or nickel hydrogen rechargeable battery), capable of testing more than 10000 times;
<b>Interface</b>	USB
<b>PC software</b>	GQC6 quality management software, printing quality inspection reports, and more functional extensions
<b>Standard accessories</b>	USB data cable, instruction manual GQC6 quality management software (downloaded from official website or provided by after-sales service), calibration board
<b>Optional accessories</b>	Mini printer, Bluetooth adapter
<b>Attention</b>	Technical parameters are for reference only, subject to actual sales of products

## Standard configuration::

Gloss Meter  
 Base With Calibration Plate  
 Certificate Of Conformity  
 Usb Transmission Cable  
 Operation Manual  
 Warranty Card  
 Wiping Cloth

## GQC6 Installation Requirements:

System: Windows  
 CPU: Core 2 Duo, 2.2 GHz, i3 more than  
 Memory: 4 GB RAM, 8 GB recommendation  
 Storage: At least 300MB  
 Display: 1280 x 1024 or higher  
 Interface: USB port  
 Download method: official website download



MRM Metrology Inc.  
 905 595 1000  
 sales@MRMmetrology.com  
 www.MRMmetrology.com

The specifications and design may be changed without notice.