

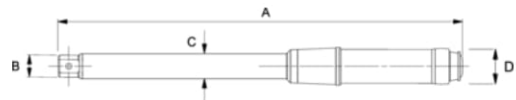


**600T-IW**  
**100-600 FtLb Single Setting Torque**  
**Wrenches**







**PRODUCT DETAILS**

- Factory Pre-Set models are set at the factory to the customer's specified torque setting, and are furnished with a Certificate of Calibration
- Please specify desired torque setting when order is placed
- Featuring a durable, non-slip cushion grip
- Uses universal round shank interchangeable heads
- Audible click and feel impulse torque control mechanism
- Tamper proof torque setting for production line use
- Accuracy:  $\pm 3\%$  CW of indicated value, in direction of torque indicator, from 20% to 100% of full scale
- Designed for use on production lines and other applications where a specific torque is required for repetitive operations
- Tamper proof torque setting for production line use Meets or exceeds ASME B107.300-2010



PRODUCT ATTRIBUTES

| Product        |  |  |  | <b>A</b> | <b>B</b> | <b>C</b> | <b>D</b> |  |
|----------------|---|---|---|----------|----------|----------|----------|---|
| <b>600T-IW</b> | 120-600 lb·in   | 162-814 Nm  | 0.990 in  | 55 in    | 1.5 in   | 1.25 in  | 1.25 in  | 10.45 lb  |