

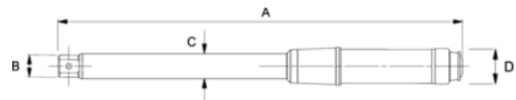


600T-I-SETW
100-600 Ft. Lb. Single Setting
Torque Wrenches







PRODUCT DETAILS

- Factory Pre-Set models are set at the factory to the customer's specified torque setting, and are furnished with a Certificate of Calibration
- Please specify desired torque setting when order is placed
- Featuring a durable, non-slip cushion grip
- Uses universal round shank interchangeable heads
- Audible click and feel impulse torque control mechanism
- Tamper proof torque setting for production line use
- Accuracy: $\pm 3\%$ CW of indicated value, in direction of torque indicator, from 20% to 100% of full scale
- Designed for use on production lines and other applications where a specific torque is required for repetitive operations
- Tamper proof torque setting for production line use Meets or exceeds ASME B107.300-2010



PRODUCT ATTRIBUTES

| Product |  |  |  | A | B | C | D |  |
|--------------------|---|---|---|----------|----------|----------|----------|---|
| 600T-I-SETW | 120-600 lb·in | 162-814 Nm | 0.990 in | 55 in | 1.5 in | 1.25 in | 1.25 in | 10.45 lb |